

Social Security's "Ticket to Work" program

at the Maryland Mental Health Employment Network (MMHEN)

www.ticket2workmd.org The MMHEN is a statewide program funded by the Maryland Mental Hygiene Administration

We make employment work for Social Security disability beneficiaries.

In this guide, we will answer these questions:

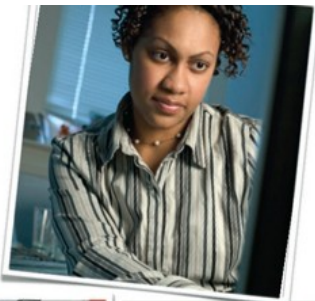
- What is Social Security's Ticket to Work program?
- What is an employment network?
- How do I pick the employment network that has services that match my needs?
- What job supports can I get from the Maryland Mental Health Employment Network?
- How can I learn what happens to my Social Security benefits if I go back to work?

"To find out what one is fitted to do, and to secure an opportunity to do it, is the key to happiness."

*Philosopher John Dewey,
1859-1952*

Maryland Mental Health Employment Network

We support employment for Social Security disability beneficiaries with mental illnesses who want to work.



Contact Us

Maryland Mental Health Employment Network

125 N. Main St.,
Rear entrance
Bel Air, MD 21014

1-855-384-2844

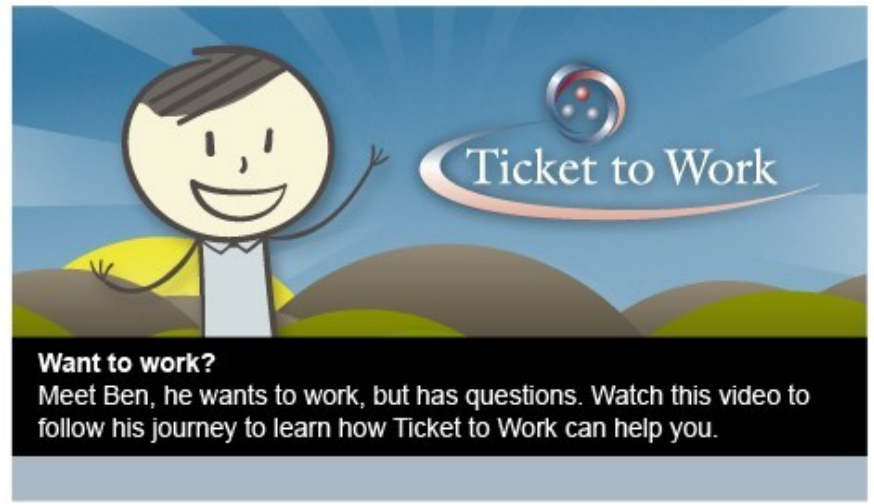
Visit us on the web:
www.ticket2workmd.org

Why work?

*Financial security . . .
meaningful jobs . . . new
friends and colleagues.*

Social Security disability beneficiaries have also learned that:

1. They are usually better off financially with a job.
2. There are safety nets so that SSDI checks continue for at least a year after the job begins.
3. If SSA checks stop due to work, they can start again if the beneficiary later stops working or if earnings drop low enough.
4. Even if cash benefits stop due to earnings, Medicare could continue for years, often forever.
5. Some workers who earn under a set amount continue to qualify for Medicaid, saving thousands of dollars a year in medical costs.
6. Some workers can qualify for tax refunds or the Earned Income Tax Credit.
7. By taking part in the Ticket to Work program or the state vocational rehabilitation program (DORS), you may be protected from medical reviews.



To view this video, visit <http://www.chooseworkttw.net>.

The Social Security Administration (SSA) Ticket to Work program

The Social Security Administration (SSA) set up the Ticket to Work program to help disability beneficiaries find and keep a job. The Ticket to Work program is free and completely voluntary.

Anyone who receives Social Security Disability Insurance (SSDI) or Supplemental Security Income (SSI) can participate.

Many people with disabilities need support services to become employed. To help them find these back-to-work services, SSA named many community organizations, schools and workforce centers as "Employment Networks" or "ENs." When you contact these ENs, you can find out if they have services that match your needs.

You then "assign" your Ticket to Work to that EN. They will talk with you about your goals and you decide together what services you need to go to work.

Social Security Administration

Ticket to Work and Self-Sufficiency

This ticket is issued to you by the Social Security Administration under the Ticket to Work and Self-Sufficiency Program. If you want help in returning to work or going to work for the first time, you may offer this ticket to an Employment Network of your choosing or take it to your State vocational rehabilitation agency for services. If you choose an Employment Network, and it agrees to take your ticket, or if you choose your State agency and you qualify for services, the provider can offer you services to help you go to work.

An employment network provides the services at no cost to you. The Social Security Administration will pay the Employment Network to assign your ticket to it, and the Employment Network takes you to work and complies with other requirements of the Program. An Employment Network serving under the Program has agreed to abide by the rules and regulations of the Program under the terms of its agreement with the Social Security Administration for providing services under the Program. Your State agency can tell you about its rules for getting services.

Ticket Number

Claim Account Number

Issue Date

Commissioner of Social Security

Form SSA-1359 (2-2002)

This is what SSA's "Ticket to Work" looks like, but you don't need an actual "ticket" to take part in the program.

Once you decide on an EN, you will need to give them your Social Security number.

Your Choice: Employment Networks

An Employment Network (EN) is an organization that helps Social Security disability beneficiaries get support services that they need to go to work. If you decide to take part in the Ticket to Work program, you must choose an employment network.

ENs include community social service agencies, trade schools, government agencies and more. SSA approves ENs before they can work with beneficiaries. However, ENs are not the same. They specialize in different services. It is best to talk to several ENs to find one that best suits your needs.

Locate an Employment Network (EN)

Maximus, a private contractor for SSA, manages the national Ticket to Work program. They can help you find an EN. Call 1-866-968-7842 or Visit www.yourtickettowork.com. Click on Directory of ENs.

The Maryland Mental Health Employment Network (MMHEN)

Maryland Mental Health Employment Network specializes in serving ticketholders who have experienced mental health issues.

Usually we work in a team with these community agencies: Alliance (Harford County), Community Behavioral Services (Baltimore and Harford Counties), Cornerstone Montgomery (Montgomery County), Goodwill STEP (Baltimore City, Carroll and Harford Counties), Humanim (Howard County), Mosaic (Baltimore County) and Upper Bay Counseling (Harford and Cecil Counties).

These agencies provide supported employment services such as job development and placement, job coaching and follow-up supports. Most ticket holders who work with these agencies also have access to other community mental health services, depending on eligibility status. We provide intensive follow-along benefits counseling after you go to work along with more job development, if needed.

Since some ticket holders do not need supported employment offered in the above agencies, we also accept people who simply need help with finding a job, intensive benefits counseling and follow-up services after employment.

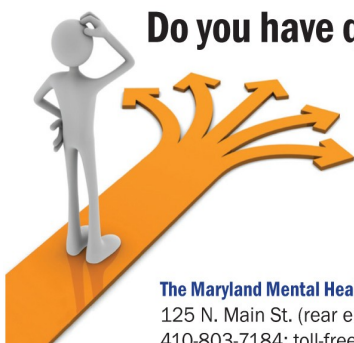


What about my Social Security benefits and health coverage?

Many people who receive Social Security disability benefits want to work to increase their income as well as to help in recovery.

However, they may be afraid because of rumors about how work will affect their benefits.

The MMHEN can arrange for you to have a personalized consultation with a certified benefits counselor. Along with the counselor, you can learn about the Social Security Administration's work incentives and safety nets that apply to your situation.



Do you have questions about Social Security's work incentives and safety nets?

Call Shannon Smiles, our Community Work Incentive Coordinator (CWIC).
It's toll-free, confidential and voluntary.

Make informed choices about work and your future!

1-855-384-2844, Press #1

Mondays from 9:00 - 11:00 a.m.
Thursdays from 2:00 - 4:00 p.m.

The Maryland Mental Health Employment Network (MMHEN)
125 N. Main St. (rear entrance), Bel Air, MD 21014
410-803-7184; toll-free: 1-855-384-2844

www.ticket2workmd.org

Assigning your Ticket to Work to the Maryland Mental Health Employment Network (MMHEN)

1. If one of our partner agencies is already serving you in a supported employment program, they will offer you the option of assigning your ticket to the MMHEN when you start vocational services.
2. If you have taken part in the Division of Rehabilitation Services, you can assign your Ticket to the MMHEN after you have been working for 90 days and your DORS case is closed.
3. If you are referred directly to the MMHEN, we will first talk with you about your job goals and the things that may be keeping you from working.
4. Depending on your needs, the MMHEN may first refer you to one of our partner agencies since they provide more intensive services than we do.
5. If we decide that the MMHEN can help you, we will talk with you about your job goals. Together, we write a plan that describes what services that you can expect. The plan will also describe your responsibilities.
6. Taking part in the MMHEN and Social Security's Ticket to Work program is free and voluntary.
7. Once you go to work, we will ask you to tell us how much money you make each month, so that we can tell SSA about your progress.
8. We will continue to provide benefits counseling so that you know about SSA's continuing safety nets for your benefits and health coverage.



Contact Us

Call to see if the MMHEN services match your needs. If not, we will try to help you find other community providers who may be able to help you.

Maryland Mental Health Employment Network

125 N. Main St.,
Rear entrance
Bel Air, MD 21014

1-855-384-2844

ksantora@harfordmentalhealth.org

Visit us on the web at
www.ticket2workmd.org

The MMHEN is funded by the Maryland Mental Hygiene Administration.

Helpful Websites

- Social Security Administration SSA (work site): www.ssa.gov/work
- Maximus: www.yourtickettowork.com
- The Red Book (Social Security's rules about work incentives): www.ssa.gov/redbook